

Hub for internationale transports

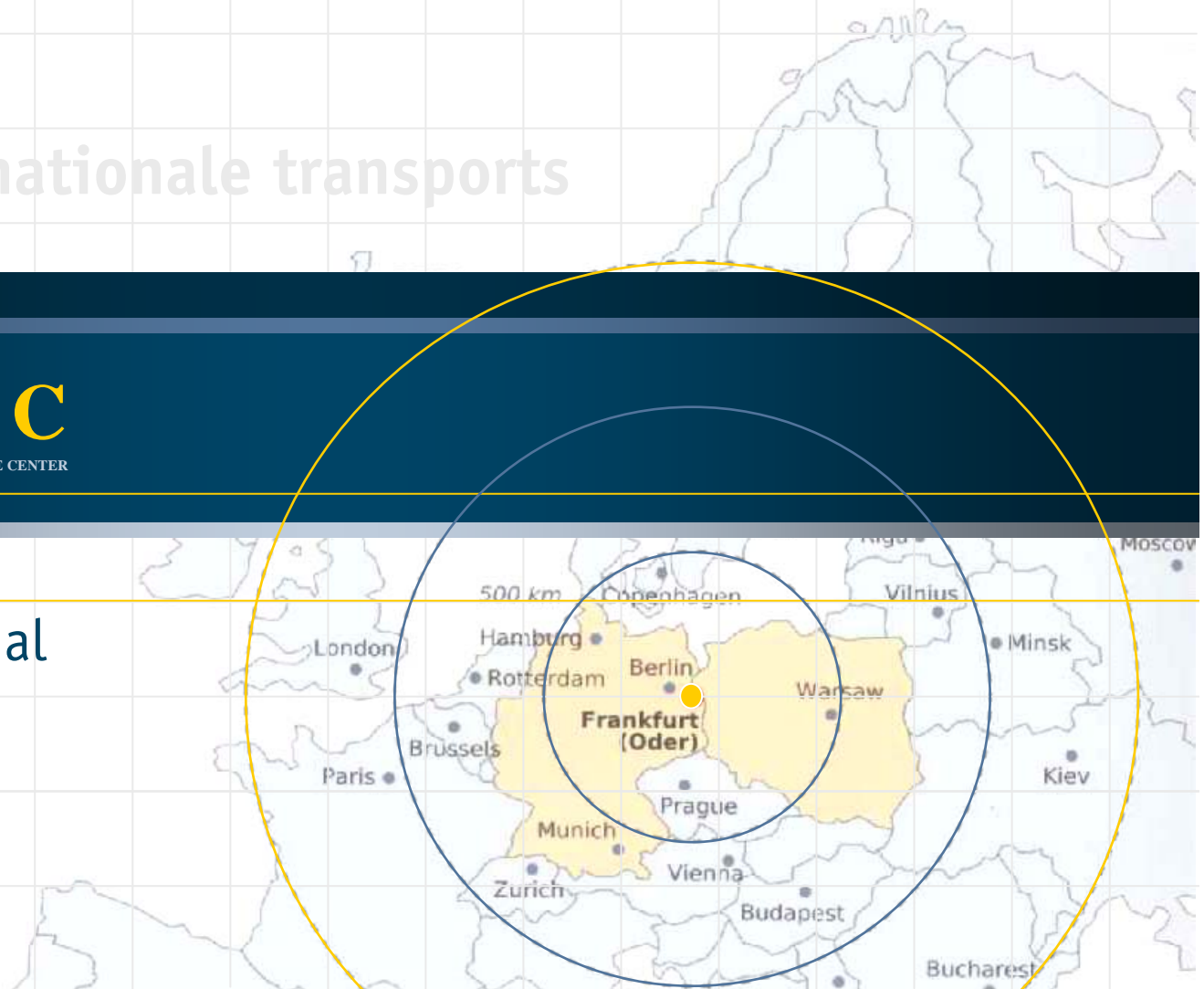


**ETTC**

EURO TRANSPORT & TRADE CENTER

Intermodal Terminal

Mai 2008



# Strategic position

- ▶ The perfect location for cross-border logistics:
  - at the threshold to Eastern Europe
  - close to the Pan-European Traffic Network Corridor II
  - More than 350 million consumers reachable within 24 hours by rail



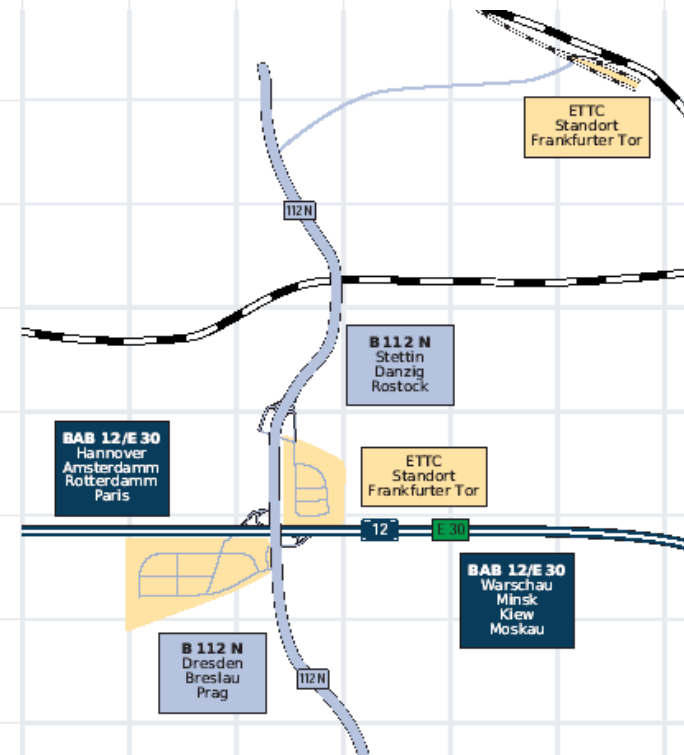
- Motorway - European Road
- Oder-Lausitz-Line:  
Federal Roads are being extended to 3-lane major Road
- Main Rail line

# Intermodal Terminal opportunities

- ▶ Major logistic junction and hub for East-West transport
  - Boosting dynamics, quality and value-adding processes for the distribution of goods
- ▶ Integrating regional potentials and growing transport demand within Polish border regions
  - such as of companies in the food and paper industry, the metal processing industry, as well as within Poland's special economic zones
- ▶ Greater transport demand through new companies settling down in the Frankfurt (Oder) region
  - companies (from the investment goods sector and the construction sector) moving to Frankfurter Tor

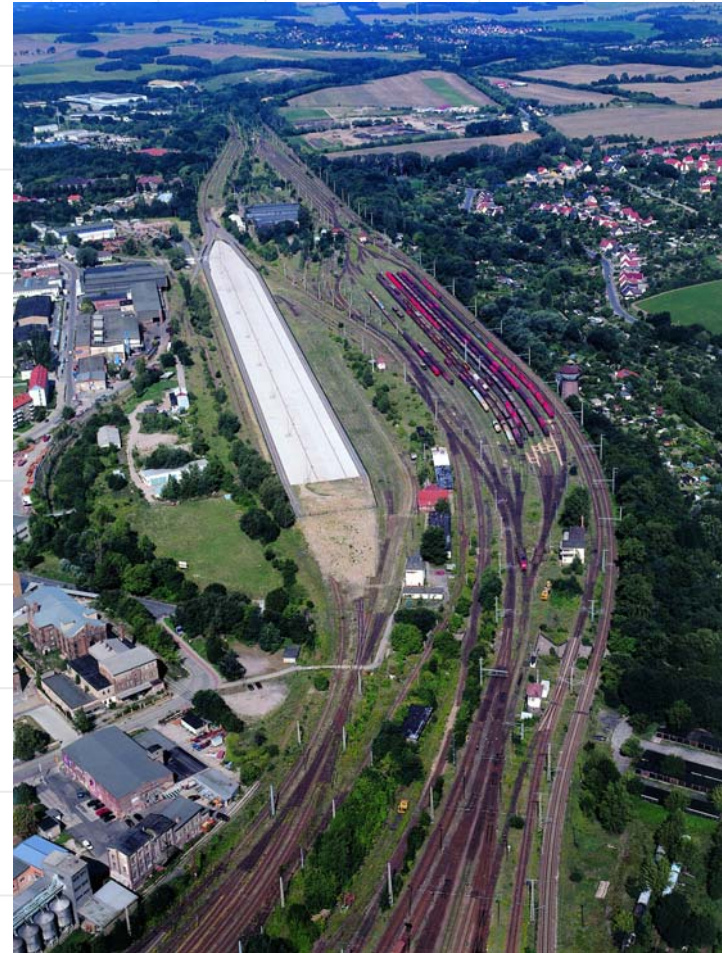
# Location: Intermodal Terminal

- ▶ Direct connection between Intermodal Terminal and the ETTC Areas at the Frankfurter Tor
- ▶ Distances:
  - Berlin-airport: 60 km
  - Outer Berlin highway ring: 43 km via BAB 12 motorway
  - BAB 12 motorway, Frankfurt (Oder) junction: 3 km



# Stage of development

- ▶ The terminal's infrastructure has been completed.
- ▶ This installation is linked to the city railway station.
- ▶ Operation permission has been granted.
- ▶ Operating company BTS-Kombiwaggon has taken over terminal.
- ▶ Contract with DB Netz AG on connecting infrastructure has been signed.
- ▶ Operations have been started in April 2005.



# Range of services

- ▶ handling and storage
- ▶ container depot
- ▶ Road pre-/post carriage in East Brandenburg & Poland
- ▶ maintenance & repair
- ▶ loading of goods into containers
- ▶ customs clearance
- ▶ commissioning and handling
- ▶ transport agency services



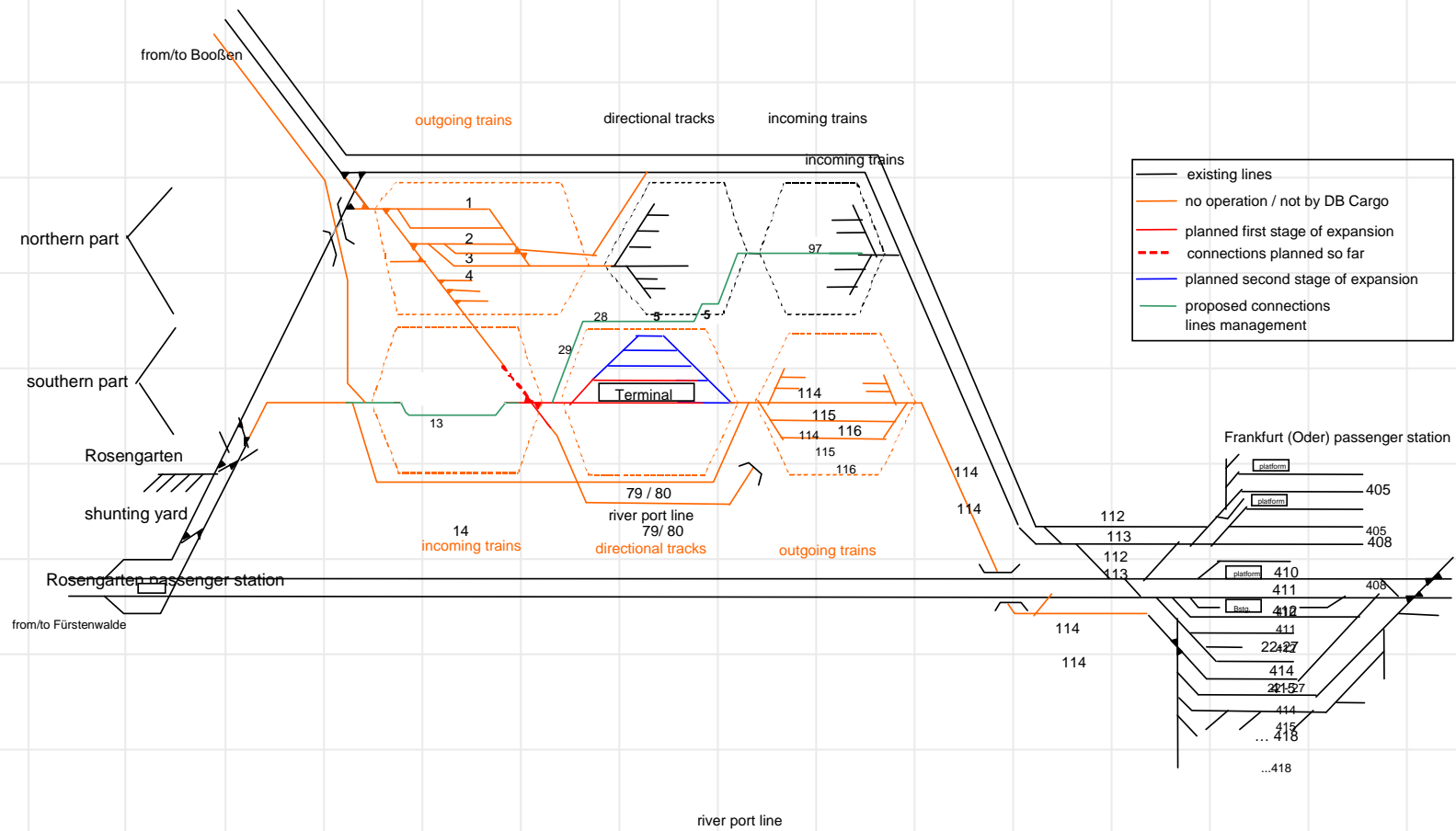
# Activated relations

- ▶ Container relation between Frankfurt (Oder) and German seaports (Bremerhaven/Hamburg)
  - Road pre-/post carriage from/to Brandenburg, Saxony and Poland
  - 6 container-block-trains per week
  - 3 container-block-trains per week to Katy Wroclawskie (Poland) in cooperation with Schavemaker b.v. (operating company: SP Intermodal)
  - Operating company: Willy Petersen Spedition GmbH
- ▶ Container relation between Frankfurt (Oder) and the under Silesian economic regions
  - 3 container-block-trains per week to Brzeg Dolny (near Wroclaw) and Slawkow (near Katowice)
  - Operating company: PCC Intermodal
- ▶ ARA seaports – Frankfurt (Oder) – Kutno/Lodz (Poland)
  - 5 container-block-trains per week
  - Operating company: PCC Intermodal
- ▶ Connected container depot run by terminal operator BTS Kombiwaggon Service GmbH

# Technical specifications

<b>Location:</b>	close to the southern part of the Frankfurt (Oder) switching station
<b>Area:</b>	5 hectares
<b>Operation permission:</b>	issued on Dec. 05, 2002
<b>Start of operation:</b>	April 2005
<b>Railway connection number:</b>	717728
<b>Operating company:</b>	BTS Kombiwaggon Service GmbH
<b>Facility Characteristics:</b>	<b>2 handling tracks</b> , each 620m <b>Handling capacity:</b> 400 cargo units/d <b>Handling area:</b> 500m long, 40m wide (600 TEU container storage capacity)
<b>Equipment:</b>	2 reach stacker

# External railway connections



## Further services



- ▶ developed railway infrastructure surrounding the terminal
  - for administration and technical maintenance of the Railway company's wagon stock
  - developing of new markets
- ▶ handling of bulk goods
- ▶ handling of single and group wagons

# Your professional partner

The **Investor Center East Brandenburg** is your competent, onsite partner.

We will support you – professionally, personally and strictly confidentially - in all matters of setting up your business here.

**Carmen Sybille Rehse / Irina Kania**

GB Euro Transport & Trade Center

Investor Center Ostbrandenburg GmbH

Im Technologiepark 1

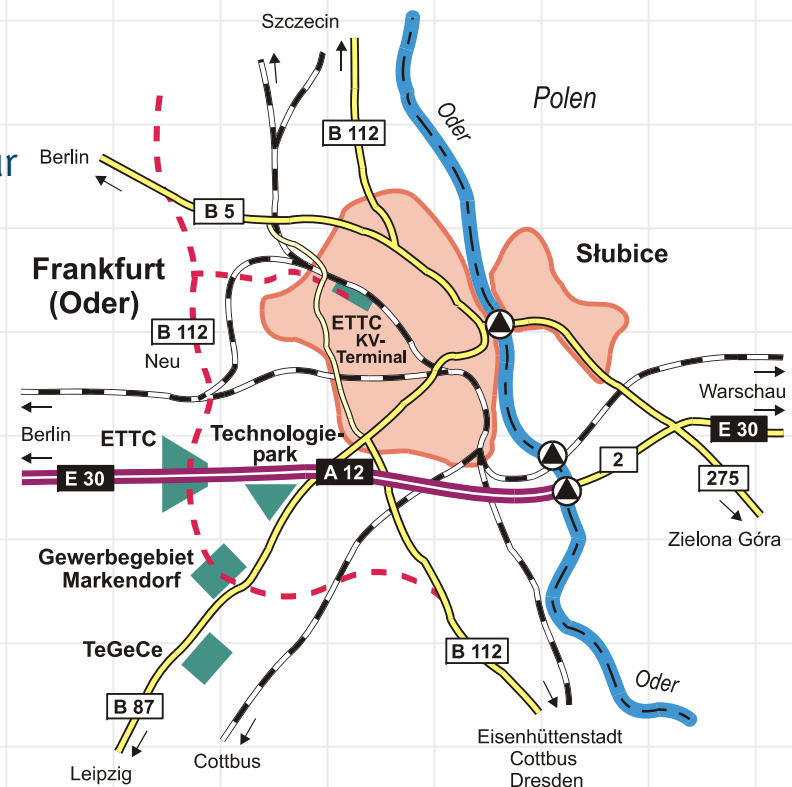
D-15236 Frankfurt (Oder)

Tel. +49 335 557 2200

Fax +49 335 557 2202

info@ettc.de

www.ettc.de



© All contents and copyright (C) 2008 with EURO TRANSPORT & TRADE CENTER

All rights regarding this publication reserved by EURO TRANSPORT & TRADE CENTER. Reproduction as a whole or in part requires prior written consent by EURO TRANSPORT & TRADE CENTER. The information contained herein is based upon our own research and on sources considered credible. EURO TRANSPORT & TRADE CENTER has thoroughly and carefully compiled all data contained in this publication, and does not assume liability for correctness, completeness or interpretation of such data.